

Specification

Vormatic 49" LCD Ultra Slim Display
настенный уличный



Ultra-thin, ultra-narrow, ultra-high-definition IP66 series Outdoor advertising screens

32"/43"/49"/55"/65"/75"

IP66

IK10
Tempered
Glass

Independent
research and
development
Full mold
design



Function ▾

- Suitable for all weather conditions
- 3000-5000 nits ultra-high brightness
- Advanced temperature uniformity active cooling system
- Intelligent touchscreen function
- Timer power on/off function
- USB plug-and-play
- Supports Wi-Fi connection;
- Supports hierarchical authorization information release;
- Supports remote cloud publishing;
- Supports mobile phone control;
- Supports Windows, Android, Linux, and other operating systems;
- Supports split-screen multi-template display, allowing for multiple formats to be played on a single screen.

High-brightness single-sided outdoor IP66 series— Advantages

Ultra-narrow border, high screen-to-body ratio

90%
screen-to-
body ratio

30mm
Ultra-narrow
bezel

88.9mm
Ultra-thin
body



- ① 1. Developed independently, this lightweight, fully laminated design seamlessly bonds the LCD and tempered glass, preventing dust and moisture intrusion.
- ② 2. Its front features an equilateral aesthetic design for a more balanced visual effect.
- ③ 3. Its flat back cover makes it easy to transport, move, and install.

Ultra-high brightness, high-definition video

3000-5000nit

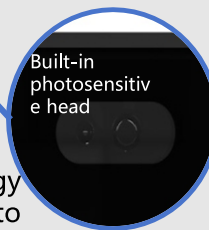
Compared with conventional displays of the same type, the brightness is more than twice that of conventional displays. In strong outdoor light conditions, the picture is smooth, delicate, clear, and visible, and the animation is vivid and colorful.

Supports FHD and UHD LCD glass

Users can choose from a variety of options to ensure that the 178° full-viewing angle image remains high-fidelity, clear and bright.



Intelligent light-sensing technology automatically adjusts brightness according to the environment based on intelligent algorithms, thereby saving power consumption.



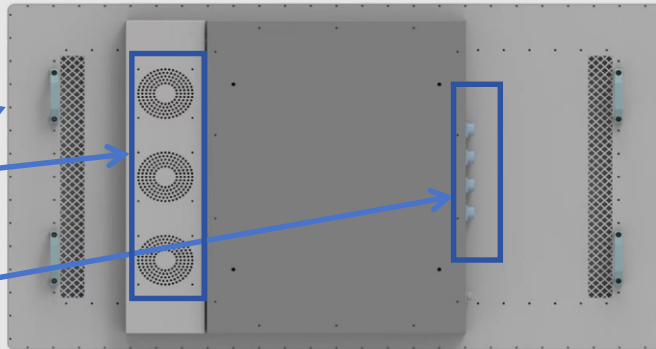
High-brightness single-sided outdoor IP66 series— Advantages

IP66

The entire device is constructed of aluminum alloy, and exposed ports use aviation-grade plugs. Whether exposed to high temperatures, humidity, and salt fog along the coast, or in harsh, low-temperature environments, it offers exceptional protection. It's waterproof, dustproof, sun-proof, and corrosion-resistant.



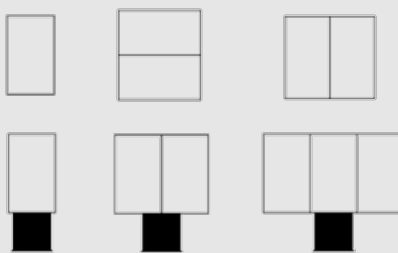
Aluminum alloy Material
Outdoor waterproof speaker
Aviation-grade plug



Diverse sizes and shapes

Installation Diversity

Choose the installation style according to local conditions, completely unlock new forms of outdoor display, show your skills in various usage scenarios, and show a variety of shapes



Various sizes

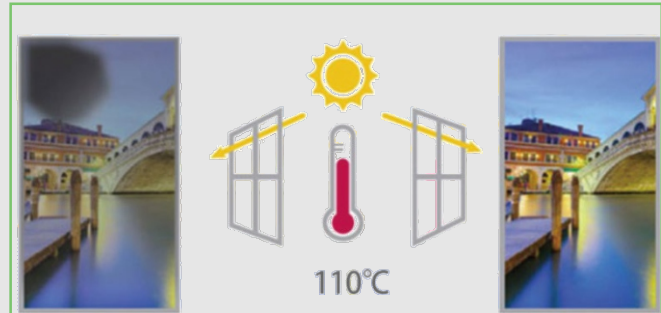


High-brightness single-sided outdoor IP66 series— Advantages

Ultra-stable performance

High temperature resistant industrial LCD glass

Even under direct sunlight, the all-in-one can resist blackening defects up to 110°C and still display images clearly.

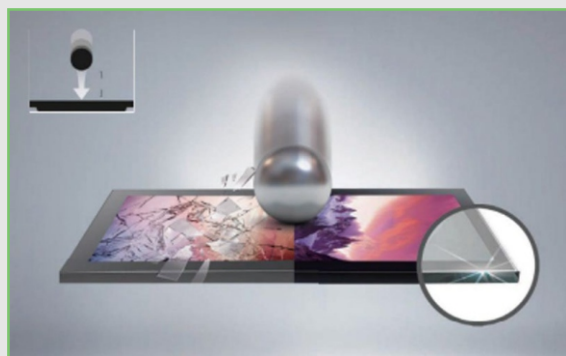
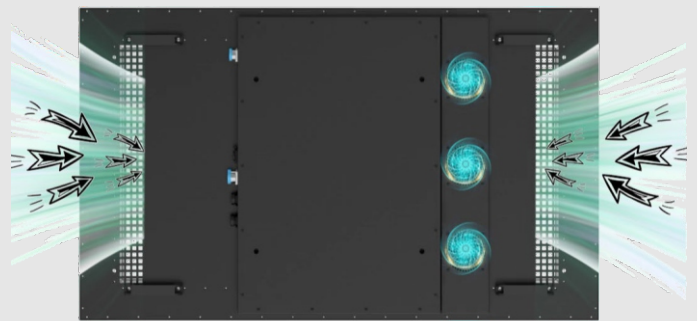


Unique uniform temperature active cooling system

The body is made of all-aluminum, which can dissipate the heat of the whole machine to the outside world as quickly as possible, minimizing the number of fans or adopting fanless cooling technology.

Self-developed centralized control motherboard

Intelligently detect temperature and control backlight temperature to ensure normal power supply of the power board, avoid black screen and improve stability.



IK10 impact resistance rating

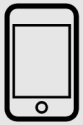
5mm tempered protective glass provides optimal protection against complex outdoor environmental factors and minimizes damage caused by external impact.

High-brightness single-sided outdoor IP66 series— Advantages

Intelligent multifunctionality

Multi-screen control method

Supports mobile phone, USB flash drive, WIFI and Internet cloud control, allowing you to control video content with one click to meet different usage scenarios and needs.



Phone



U Disk



WIFI



Cloud Control



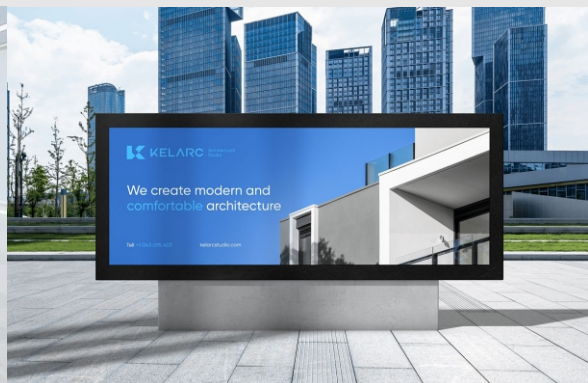
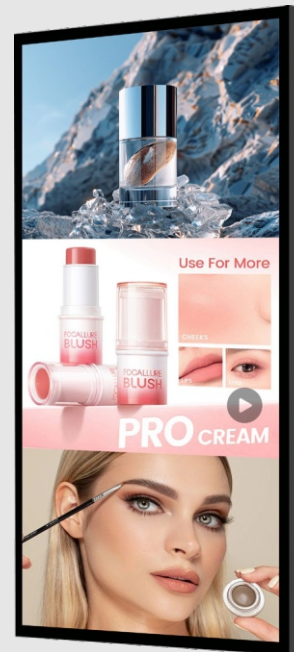
Touch



Support multiple templates display on one screen

One screen can display multiple formats and play pictures and videos simultaneously to show new ideas and more attractive content.

1	2	3	4



Scope of application: media business districts, pedestrian streets, residential areas, parking lots, high-speed rail stations, bus stations, tourist attractions, square parks and other outdoor scenes.

Outdoor IP66 series — parameters

Size	32"	43"	49"	55"	65"	75"
Model	GL320D-IP66	GL430D-IP66	GL490D-IP66	GL550D-IP66	GL650D-IP66	GL750D-IP66
Resolution	1920*1080				3840*2160	
Polarizer surface treatment	AG /Wormally black				AG / Wormally white	
Product Size	764.8(H)x459.3(V)x98.9(T)	1007.6(H)x595.8(V)x88.9(T)	1140.2(H)x670.4(V)x88.9(T)	1275.9(H)x746.8(V)x88.9(T)	1494.8(H)x869.9(V)x98.9(T)	1691.6(H)x970.9(T)
Display Size	700.4(H)x394.9(V)	944.2(H)x532.4(V)	1076.8(H)x607 (V)	1212.6(H)x683.4(V)	1431.5(H)x806.5(V)	
Interface connector	Supports 4*USB, 2*serial ports (6 optional) and 2*SATA ports					
VA	178°H/178°V					
Brightness	1000~3000nit		1000~5000nit		1000~3000nit	
Contrast	1200		1300	1000	1200	
Power	<120W	<200W	<250W	<280W	<350W	
Response time	16	20	12	13	16	
Lifespan	50000hrs					
Operating temperature	-20/70		-30/80			

Appearance size

